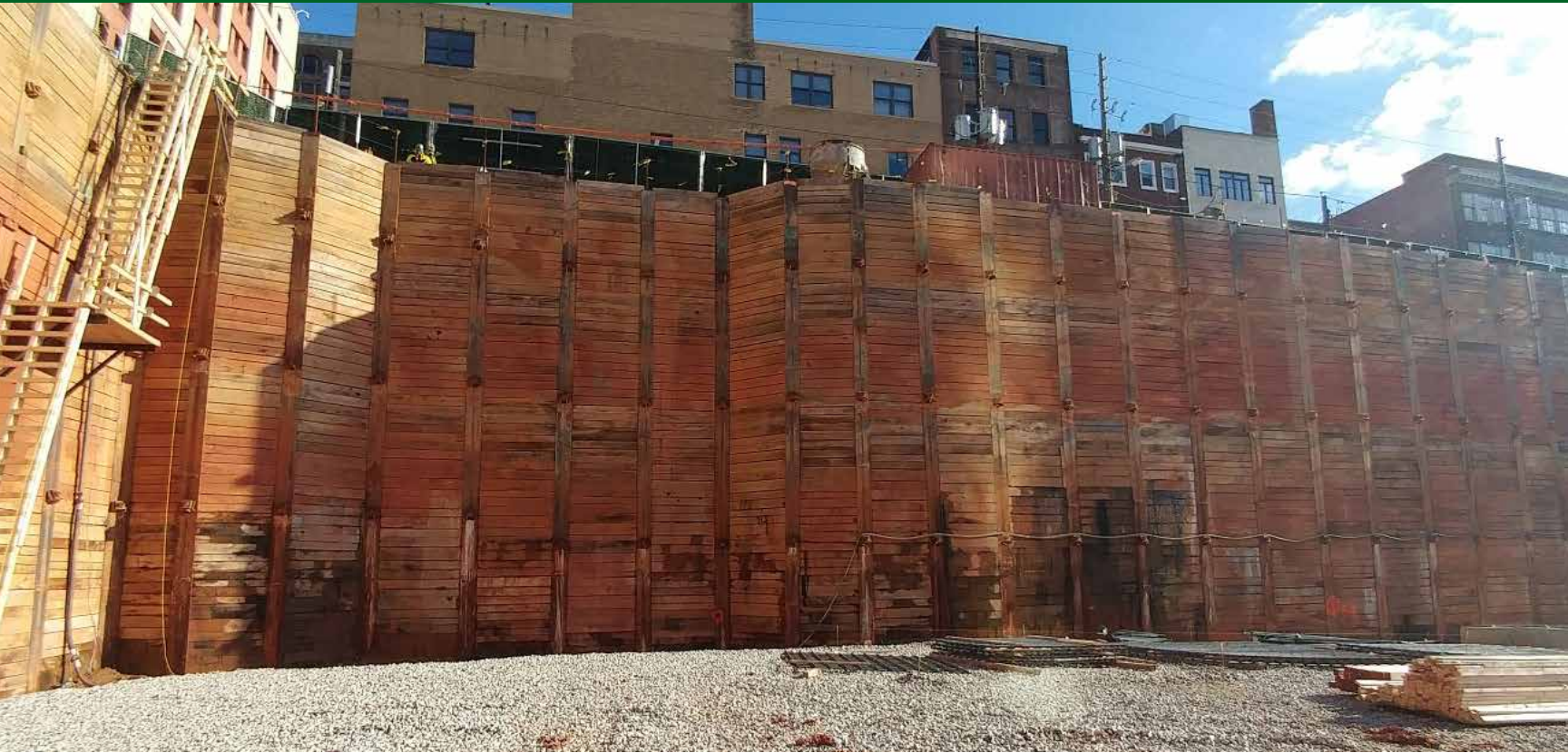


NUCOR®

SKYLINE

Wide Flange





Nucor Skyline, your true project partner

We are a premier steel foundation manufacturer and supplier, serving the North American market. Skyline Steel, LLC (doing business as Nucor Skyline) is a Nucor company, the largest producer of steel in the United States, and this relationship strengthens our ability to service our customers and the industry.

- Over 20 Sales Offices in North America
- Manufacturing, Coating and Fabrication Expertise
- Dozens of Stocking Locations
- Exclusive Engineering Support

Our flagship products include an unparalleled assortment of:

- H-Piles
- Steel Sheet Piles
- Pipe Piles
- Geostructural Products
- Wide Flange and other Structural Sections
- Piling Accessories

Nucor Skyline’s knowledgeable engineering team works with owners, engineers, and contractors long before ground is broken. To ensure seamless project coordination and completion, our engineers propose solutions throughout all aspects of design, material selection, installation, and construction sequencing. Skyline’s engineering support is extended even further to include provision of onsite assistance after a project has started. Our relationships extends beyond sales – we are your true project partner.

Nucor Skyline is a proven leader in North America’s structural and foundation industries as a supplier of wide flange products for various applications. Through its extensive network of manufacturing and fabrication capabilities, we are able to provide wide flange material for any project, public or private.

- Wide range of wide flange sizes and weights
- Custom lengths manufactured according to your specifications
- Fabrication services to meet all your project requirements
- Multiple stocking locations throughout the U.S. and Canada
- Exclusive engineering support throughout the entire project life cycle
- Your all-encompassing structural steel solutions partner

When compared to standard beams, the ‘H’ design of a wide flange beam provides better distribution of the weight of a structure over a wider area, resulting in the ability to support heavier and larger structures. This allows the project partner the flexibility to build grander constructions, without the risk of weakening beams.

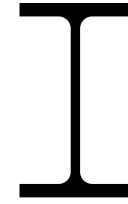
Ease of transportation and use, due to their lightness, is another inherent advantage of using wide flange beams. Their light weight makes them ideal for transporting and installing across the globe.

Wide flange beams are perfect for many structural and foundation applications, including the following:

- Walers & Bracing for Cofferdams
- Secant & Tangent Pile Walls
- W-Z Walls
- Beam & Lagging/Soldier Pile Walls
- Sound Walls
- Falsework for Bridges & Other Structures

Table of Contents	
PRODUCT DATA	
Wide Flange	2
PRODUCT DETAIL	
Delivery Conditions	24

Wide Flange



Available Steel Grades

AMERICAN			CANADIAN			EUROPEAN*		
ASTM	YIELD STRENGTH		CSA G40.21	YIELD STRENGTH		EN 10025 & EN 10113	YIELD STRENGTH	
	ksi	MPa		ksi	MPa		ksi	MPa
A 36	36	250	Grade 350 W	50	350	S 235	34	235
A 572 Grade 50	50	345				S 275	40	275
A 588	50	345				S 355	51	355
A 690	50	345				S 460 HISTAR	67	460
A 709	50	345						
A 913	50	345						
A 913	65	450						
A 992	50	345						

Highlighted fields represent the most commonly used and readily available steel grades. Additional grades available upon request. *HISTAR only available in some sizes.

Delivery Conditions & Tolerances

	ASTM A 6		
Mass	± 2.5%		
Depth	± 0.125 in.		
Length	30 ft. and under	Over 30 ft.	
Beams W 24 and Under	± 0.375 in.	+ (0.375 in. + (Length - 30) / 80	-0.375 in.
Beams Over W 24	± 0.5 in.	+ (0.5 in. + (Length - 30) / 80	-0.375 in.
Flanges out of Square			
Beams W 12 and Under	≤ 0.25 in.		
Beams Over W 12	≤ 0.3125 in.		
Web off Center	≤ 0.1875 in.		
Greatest Depth over Theoretical	≤ 0.25 in.		
Camber and Sweep	(0.125 in) * (Length / 10)		
Camber and Sweep for Columns**			
45 ft. and Under	(0.125 in) * (Length / 10) but not over 0.375 in.		
Over 45 ft.	(0.375 in) + (0.125 in * (Length - 45) / 10		

** W 8 x 31 and heavier, W 10 x 49 and heavier, W 12 x 65 and heavier, and W 14 x 90 and heavier order as columns. If other sections are ordered as columns, the tolerances are subject to negotiation with manufacturer.



www.nucorskyline.com | 888.450.4330

For technical questions and engineering support, please contact us via our technical hotline at: **866.875.9546** or email us at: engineering@nucorskyline.com.

About Nucor Skyline

A premier steel foundation supplier serving the U.S., Canada, Mexico, the Caribbean, Central America, and Colombia, Skyline Steel, LLC (doing business as Nucor Skyline) is a wholly-owned subsidiary of Nucor Corporation, the largest producer of steel in the United States.